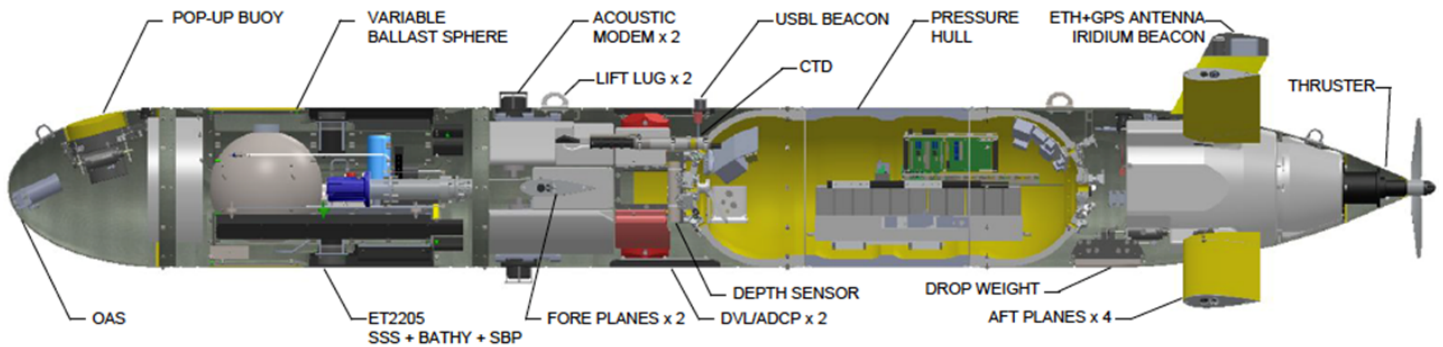


TECHNICAL SPECIFICATIONS

ISE EXPLORE: NUPIRI MUKA

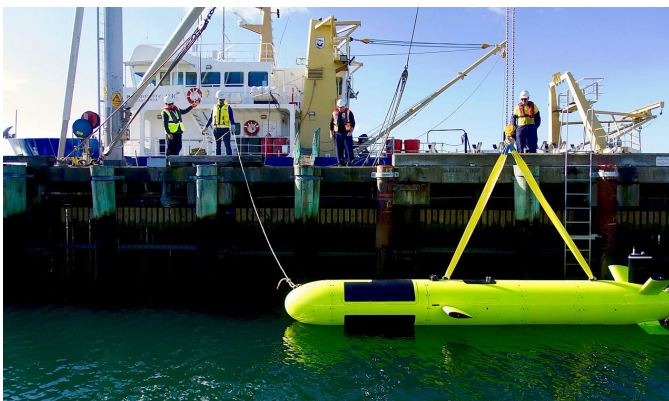


The Explorer class nupiri muka is a large modular AUV capable of operating in some of the most difficult conditions on earth, including beneath floating ice shelves. This vehicle has flexible payload options and can dive to 5000m and travel at speed between 1.0-2.5 m/s.

Hire nupiri muka

AMC Search can provide a range of services to meet your requirements, including:

- AUV Operation: hire the vehicle and up-to two operators on a daily basis
- Data processing: raw data hand-off or provision of a full report and processed data product.



Contact:
Guy Williams
guy.williams@utas.edu.au
+61 (0) 409 216 192

- Depth Capability: 5,000 m
- Length: 7.5m
- Weight: 2,000 kg
- Endurance: 40 hrs (300km)
- Speed: 1.0-2.5 m/2
- Power: Li-Ion Batteries (32 kWh)
- Recharge Time: 8 hrs
- Propulsion: Brushless DC motor driven propeller
- Navigation: IXBlue fibre-optic Inertial Navigation System, coupled to RDI Workhorse Doppler
- Velocity Log
- Obstacle Avoidance: Imagenex DeltaT (1200 vertical x100 horizontal)
- Acoustic Communications: Sercel MATS 3G, 15km range
- Acoustic Tracking: IXBlue GAPS, 4 km range
- Surface Communications: Ubiquity 2.4GHz WiFi (2km) and Xeos Apollo Iridium (Global)
- Sonar: Edgetech 2205 combined system: 520 kHz Bathymetry, 230/520 kHz sidescan, and 4-24 kHz Sub-Bottom. Imagenex DeltaT profiling multibeam
- Magnetometer: OFG Self-compensating, +/- 0.65 Gauss, 0.0001 mGauss resolution
- CTD: RBR Concerto Conductivity, Temperature, Depth, Dissolved Oxygen, Turbidity
- ADCP: RDI Workhorse Navigator 300 kHz, upward and downward
- Water Sampler: custom 20 x 150ml trace-metal clean