



AMS-TEC

AUTONOMOUS MARITIME SYSTEMS
TEST AND EVALUATION CENTRE

Australia's Temperate and High Energy Autonomous
Maritime Systems Test & Evaluation Centre (AMS-TEC)

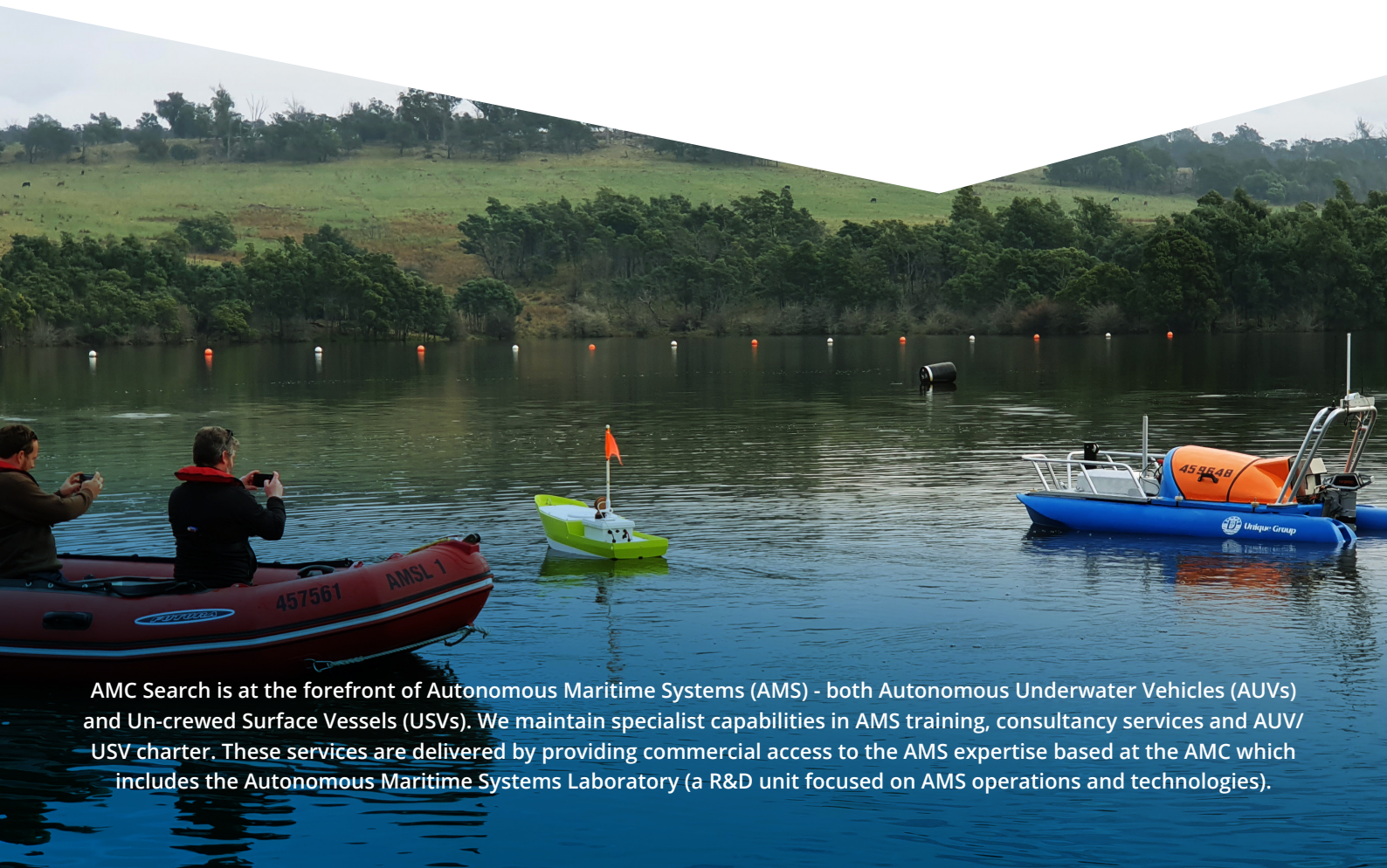
Training and Consultancy Division of the Australian Maritime College

WELCOME TO AMS-TEC

AMS-TEC is Australia's centre of excellence for testing and evaluating AMS technologies in temperate and high energy marine environments.

Located at the Beauty Point Campus and integrated into the Defence and Maritime Design and Innovation Precinct at the Australian Maritime College in Tasmania, AMS-TEC provides:

- Controlled environments for AMS operators, designers and manufacturers to test and evaluate systems in multiple marine environments including estuarine, sheltered and high energy sea states.
- A centralised controlled location for AMS operators to undergo training on how to operate and plan missions with AMS technologies.
- Access to AMC's specialist engineers, sensor integrators and platform developers to support test and evaluation activities where needed.
- Access to real-world infrastructure to test and evaluate AMS sensor payloads including wharfs, moored vessels and different bottom types.
- Other services including providing access to specialised AMS support vessels, workshops and laboratories.
- Access to digital twins, simulation services and special order surveyed areas to test and evaluate AMS.

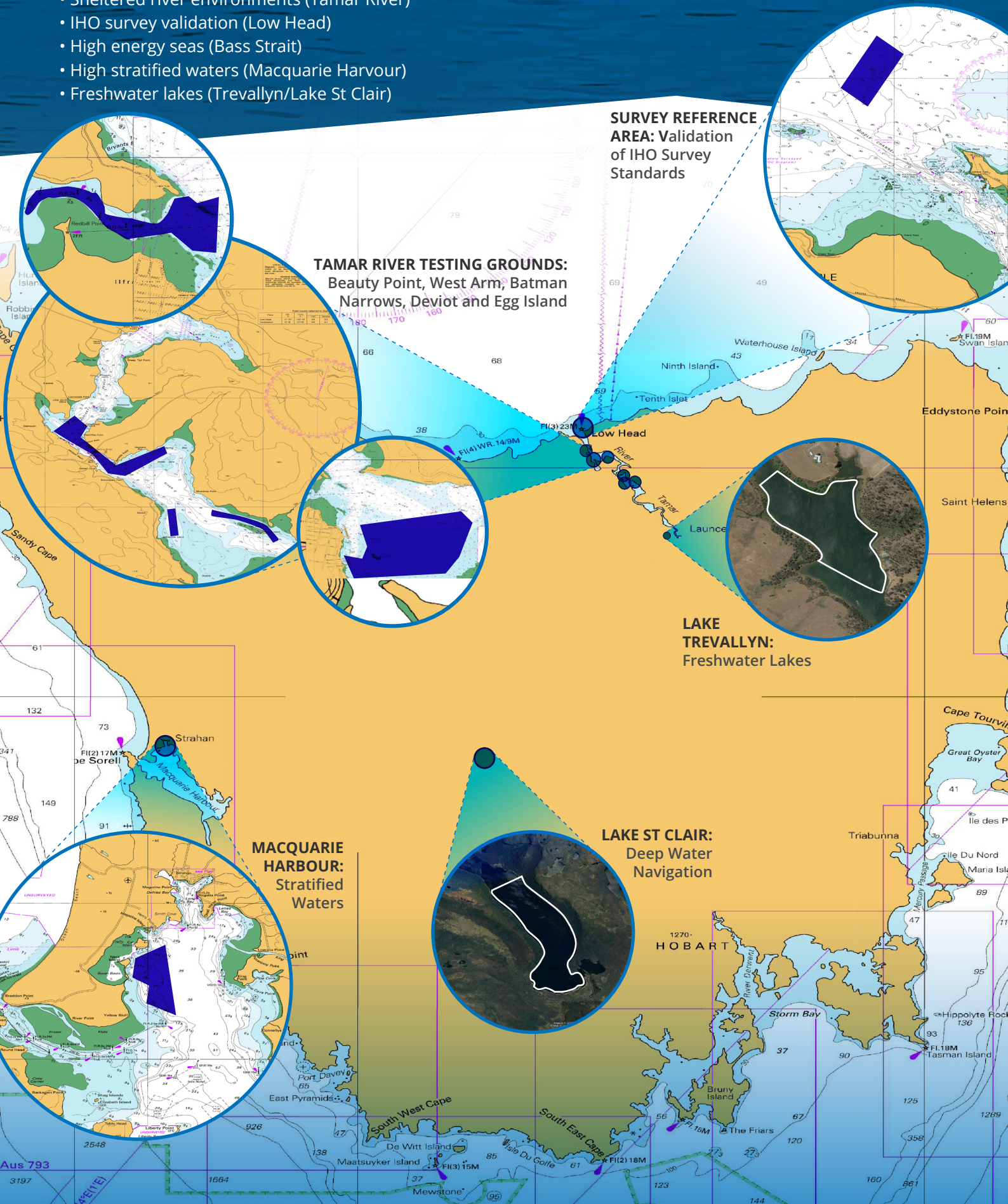


AMC Search is at the forefront of Autonomous Maritime Systems (AMS) - both Autonomous Underwater Vehicles (AUVs) and Un-crewed Surface Vessels (USVs). We maintain specialist capabilities in AMS training, consultancy services and AUV/USV charter. These services are delivered by providing commercial access to the AMS expertise based at the AMC which includes the Autonomous Maritime Systems Laboratory (a R&D unit focused on AMS operations and technologies).

THE TESTING GROUNDS

AMS-TEC provides safe and controlled access to multiple environments to test and evaluate AMS technologies, including:

- Estuarine environments (Tamar River)
- Sheltered river environments (Tamar River)
- IHO survey validation (Low Head)
- High energy seas (Bass Strait)
- High stratified waters (Macquarie Harbour)
- Freshwater lakes (Trevallyn/Lake St Clair)



SURVEY REFERENCE AREA: Validation of IHO Survey Standards

TAMAR RIVER TESTING GROUNDS: Beauty Point, West Arm, Batman Narrows, Deviot and Egg Island

LAKE TREVALLYN: Freshwater Lakes

MACQUARIE HARBOUR: Stratified Waters

LAKE ST CLAIR: Deep Water Navigation

ACCOMODATION AND CONVENIENT TRAVEL OPTIONS

For interstate users of AMS-TEC, there are many accommodation options available, including Norfolk Hall, motel style accommodation situated on the main AMC campus in Launceston, Tasmania.

Utilised by our commercial clients, Norfolk Hall is affordable and very comfortable, providing the following facilities:

- Queen size beds
- En-suite bathroom
- Television
- Fridge
- Rooms serviced daily (excluding weekends)
- Affordable meals are available at the on-site AMC
- Cafeteria



AMS-TEC is easily accessible from Launceston, which is a well connected regional city with direct flights from all major Australian centres including Sydney, Melbourne, Brisbane, Adelaide and Perth.

