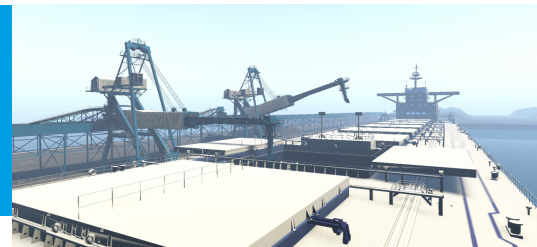


LOADING BULK CARRIERS (ONLINE) ONLINE

This course is designed to provide participants with a clear understanding of the process involved in loading a bulk carrier. Participants will understand the requirements of the IMSBC Code related to hold preparation, loading, trimming cargo and preparing the vessel for sea.

Methodology of loading cargoes is also discussed in terms of minimising damage to the vessel and ensuring that the vessel remains upright throughout the load.



DURATION: Online, approximately 30 minutes

COURSE DATES:
Course Fee | Online | \$45

Delivery Method: 100% online training and assessment

Designed for: Junior Deck Officers, Deck Ratings, Dry Bulk Cargo Loading Terminal, Dry Bulk Unloading Terminal

Content Types: Written material, images, videos, animation, 3D scenarios

Learning Outcomes: Upon successful completion of this training, participants will:

1. Know the shore side systems available for loading bulk ships
2. Understand the load plan and responsibility for following this
3. Appreciate the impact of loading cargo on the structure of the vessel
4. Know the importance of keeping the vessel upright during discharge
5. Be able to explain the method of spreading cargo across the hold

Assessment: An assessment will be provided at the end of the course (fully online), you will have unlimited attempts to achieve the 100% pass mark.

References: IMSBC Code

Certification: Australian Maritime College Completion Statement.

Language: English

Duration: Approximately 30 minutes

Compatibility: Google Chrome, Firefox, Internet Explorer, Edge, Safari, Android Phone, iPhone, iPad

RELATED COURSES

[Longitudinal Stresses on a Ship \(Online\)](#)
[Ballast Systems \(Online\)](#)
[Safe Bulk Loading Practice Online](#)
[Maritime Confined Space Entry Refresher Training \(Online\)](#)
[Introduction to Draught Surveys \(Online\)](#)
[Bulk Carrier Cargo Plans Explained \(Load and Unload\) \(Online\)](#)
[Bulk Carrier Layout and Construction \(Online\)](#)
[Understanding Ship Mooring from Terminal Perspective \(Online\)](#)

Product Code: 003-042 | Version 2, 27 October 2023

Enrolment: Click the 'Apply' button to register for the course. Access to the online course will be provided on the next business day.

Course Preview: [Click here to review the online course](#)

REGISTRATION TERMS

Face to face courses

Cancellations up to 15 working days prior to the scheduled date will be accepted without penalty. Cancellations less than 15 working days will be subject to 100% cancellation fee.

AMC Search reserves the right to cancel the course 15 working days prior to the scheduled date if insufficient registrations are received. Any fees paid for cancelled courses will be refunded in full.

When making flight bookings please ensure you book on a fully refundable basis.

PAYMENT TERMS

Online course registrations

Payment of course fees, or authorisation to invoice from your company, is required before access to the online learning environment is provided. Please note, it will take between 2-4 business days to provide your access to the online course if you have not studied previously with AMC Search, the Australian Maritime College or the University of Tasmania.

Self-funded registrations

Once payment is requested, it must be received by the stated deadline. If payment is not received and no contact has been made by that deadline, AMC Search reserves the right to remove you from the course.

Company sponsored registrations

All company-sponsored registrations must be supported by a valid Purchase Order (PO) within 7 days of registration. Please send the PO to AMCS.courses@utas.edu.au and include the student's name in the subject line. If these requirements are not met, AMC Search reserves the right to remove the student from the course.

PAYMENT OPTIONS

Payment methods accepted:

- Register now and pay later (payment required 15 days before the course starts)
- Credit Card (online or via (03) 6324-9850)
- Bank Deposit
- Company sponsorship.

Detailed payment options are available [here](#).

ONLINE DELIVERY

